

Global Bridge Associates

is dedicated to bridging cultures.





About Us

At Global Bridge Associates (GBA), we strive to create a welcoming and supportive environment through safe, nurturing, and enriching homestay experiences for international students.

GBA's programs include:

- Study Abroad
- Host an International Student
- Cultural Exchange
- Student Homestay Experience
- And so much more!

Whether you're looking to travel abroad on a student exchange program or interested in hosting an international student, Global Bridge Associates offers the support and services to ensure that both students and host families make the most of the international student experience.

We handle everything from housing and insurance to logistical support, allowing you to focus on what you do best—supporting student success.

“

We're committed to aligning with your values and providing seamless, reliable support throughout the study abroad journey.

”



Background

Founded in 2016 Global Bridge recognizes that the Host Home or Homestay experience is often the most complex and high-stakes component of an international program for schools and administrators. One of the primary challenges in establishing and maintaining such programs is navigating concerns around liability and ensuring the safety and well-being of students.

To alleviate these challenges, Global Bridge offers a fully managed, end-to-end support program designed to provide schools with complete peace of mind. Our comprehensive services include dedicated staffing, monthly reporting with host families and students, and strategic program oversight. By streamlining operations and implementing proactive risk management strategies, Global Bridge minimizes institutional liability while fostering a safe, enriching, and well-supported homestay experience for every student.

Guardianship

Taking on the responsibility of placing minor students in a host home while they live away from their parents is a significant commitment. Global Bridge Associates (GBA) assumes this responsibility with the highest level of care, ensuring all necessary due diligence is met. This includes, but is not limited to:

- Power of Attorney Documents
- Liability Waivers
- Student Medical Insurance
- Student Visa Documents

Financial Management

GBA manages the program's financial records, including overseeing custodial accounts, placement fees, and monthly payments to host families.

Local Homestay Coordinator

- GBA's Executive Leadership team hires Local Coordinators for each school, who are responsible for overseeing all aspects of the homestay program at their assigned school. This Local Coordinator is responsible for organizing and supporting the efficiency of the Homestay Program as well as providing support to students, parents, host families and schools.

Recruiting and Management of Host Families

- Outreach & Promotion – Engaging with the local community through schools, social media, and word-of-mouth to attract potential host families.
- Application & Screening – Conducting background checks, home visits, and interviews to ensure families meet the necessary standards.
- Training & Orientation – Providing resources and guidance on cultural awareness, student needs, and expectations.

- Matches students with homestay families.
- Notifies relevant parties of student moves and changes.
- Ongoing Communication – Regular check-ins with host families and students to address any concerns or challenges.
- Conflict Resolution – Mediating any issues that arise to ensure a positive experience for both the student and host family.
- Incentives & Recognition – Offering financial compensation and acknowledging outstanding host families for their contributions.

Orientation and Training

- Creates and maintains the Host Family Handbook for families and the Student Handbook for students.
- Organizes ongoing training sessions and networking meetings for homestay families.
- Conducts orientation sessions for new students entering the homestay program.
- Supports students and families in navigating cultural, social, and emotional aspects of the homestay experience.

Monthly Reporting and Monitoring

- Conducts a Monthly Report between the student, host family, and school, providing all parties with updates on the student's achievements for that month.
- Translates all communications into the student's native language to keep the natural family informed and involved in the student's progress.
- Conducts in-person home visits once per quarter.
- Completes monthly student and host family check-ins via phone.
- Participates in and assists with monitoring students at international program activities and events.

Communication and Conflict Resolution

- Acts as a liaison between the school, natural parents, host families and corresponds directly with these parties via telephone, in person or email.
- Provides ongoing support in communicating with the natural family when issues arise at school or within the host family.
- Effectively manages conflict situations and assists in the communication process.
- Facilitates resolution through any challenges, misunderstandings, or crises that may occur.

Communication and Conflict Resolution

- Acts as a liaison between the school, natural parents, host families and corresponds directly with these parties via telephone, in person or email.
- Ongoing assistance with communication for the natural family when issues arise at school or in the host family.
- Deals effectively with conflict situations and assists with the communication process.
- Facilitation through any area of difficulty, misunderstanding, or crisis that occurs.

Student Transportation (Airport and Travel)

- Coordinates and communicates flight arrangements, providing 24/7 support during the arrival period for any flight delays or changes, including arrival, departure, and scheduled year-round holidays.
- Arranges airport pick-up and schedules for visiting parents, assisting with hotel bookings and local transportation.
- Provides transportation for students when needed (special circumstances), beyond normal school activities and host family responsibilities.
- Manages student travel within the U.S. for Christmas and spring vacations.



GUARDIANSHIP

Safeguarding Measure



Student Safety & Safeguarding

Taking on the responsibility of placing minor students in a host home while they are away from their parents is a significant commitment. GBA will uphold this responsibility by ensuring proper due diligence and assuming liability to provide a safe and supportive environment.

GBA is dedicated to safeguarding and promoting the welfare of children and young people. We adhere to ISP's Group Child Protection and Safeguarding Policy, and expect all GBA staff, contractors, and partners to uphold this commitment.

**Safeguarding is everything we
do to keep children safe, healthy,
happy and therefore learning.**



HOME STAY Program

Safe, suitable and caring
household environment



HOMESTAY Program



HOMESTAY

A Host Family is responsible for providing a safe, supportive, and nurturing home environment, offering the Host Student an authentic experience of daily life in an American household. They should foster independence by encouraging the student to participate in household routines. Clear communication of expectations from the start is essential.

HOST FAMILY EXPECTATIONS

1. Room and Furnishings

The Host Family agrees to provide a private room, a bed with linens adequate storage (closet/dresser) desk, chair and have proper lighting and a window,

2. Food and meals

The Host Family will provide meals throughout the student's stay, including weekends. Lunch may be provided at school.

3. Transportation

The Host Family is responsible for transporting the Host Student to and from school and school-related activities, such as after-school clubs or sports.

4. Activities and Interaction

Our Host Families actively engage the Host Student, encouraging their participation in family activities and conversations to foster a sense of belonging and connections.

5. Communication

The Host Family may communicate with the student's family but must include the GBA coordinator in all interactions, including with relatives or agents.



BOARDING Experience

The Best of Both Worlds





Our boarding program combines traditional student housing with a caring, well-supervised family atmosphere, fostering independence within a supportive community.



What to Expect From the Boarding Experience

Students live and study together, enjoying a well-rounded immersion experience. Separate residences for girls and boys are supervised by a dedicated community member, serving as the "Resident Parent."

Open to students in grades 9-12, our boarding program fosters growth and connection for our international students.

The boarding experience fosters exchange student independence and growth in a safe, structured home-like environment.

Boarding students enjoy the following benefits and amenities:

- Safe and caring environment with room for independent study
- A supportive Resident Parent from the GBA community
- Daily nutritionally-balanced meals
- Shuttle service to and from school and for planned excursions
- Convenient location near campus



SUMMER CAMPS



ORANGE LUTHERAN

High School





Location & Schedule

Orange Lutheran High School
2222 N. Santiago Blvd.
Orange CA 92867

Morning and Afternoon Camps

Age Group & Length

9th through 12th Grade

9 Weeks
June 9th - August 7th

Course Information

Orange Lutheran High School offers a variety of educational and enrichment camps tailored to different interests and age groups .

Academic Camps focus on strengthening core subjects and developing critical thinking skills. **Activities Camps** emphasize teamwork, leadership, and physical fitness through sports and recreational programs. **Arts Camps** foster creativity in visual and performing arts, providing hands-on experiences in various artistic disciplines. Each camp is designed to offer an engaging, supportive learning environment that promotes both personal and academic growth.





LYNN-ROSE

School





Location & Schedule

Lynn-Rose School-Heights
7205 Millcreek Dr.
Mississauga, ON L5N 3R3

Drop off: 9:00 AM
Pick up: 3:00 PM
Extended Care Hours (available)

Age Group & Length

Kinder through 6th Grade

8 weeks
June 30 - August 22

Course Information

Lynn Rose School offers exciting summer camps to inspire creativity and curiosity. **Magic of Coding** introduces programming basics, while **Engineering Showcase** explores hands-on design. **Language Adventure** immerses students in new languages, and **Dragon's Den** Challenge fosters entrepreneurship. **Science Spectacular** and **Journey into Science Jungle** offer hands-on scientific exploration. **Unleash Your Creativity** nurtures artistic expression, and **World Stage** empowers students in performance arts. Each camp promotes growth in a fun, dynamic environment.

Explore these programs and ignite your summer adventure!





ST FINBAR

School



Location & Schedule

St. Finbar School
2010 W Olive Avenue
Burbank, CA 91506

Drop off: 9:00 AM
Pick up: 3:00 PM
Extended Care Hours (available)

Age Group & Length

Kinder through 9th Grade

8 weeks
June 30 - August 22

Course Information

PlanetBravo's Techno-tainment Summer Camp provides dynamic, hands-on, project-based STEM experiences in one-week sessions across Los Angeles and Orange counties. Students can choose from a variety of courses and have the flexibility to explore different subjects or repeat favorites, with each course offering a wealth of possible projects. **Daily schedules are balanced with indoor and outdoor activities, including afternoon sports, snack breaks, and the popular Network Game Time for computer games.** Multiple activity options ensure every student finds something engaging and enjoyable. **With a blend of learning, creativity, and play, the camp offers a well-rounded and fun summer experience.**





FAIRMONT

Schools

global bridge
ASSOCIATES



Location & Schedule

Fairmont San Juan Capistrano
26333 Oso Rd
San Juan Capistrano, CA 92675

Morning and Afternoon Camps

Age Group & Length

Kinder through 9th Grade

9 Weeks
June 9 – August 8

Course Information

Fairmont Schools' 2025 Summer Programs offer enriching experiences across various interests. The ACA-accredited Summer Camp features **arts, sports, field trips, and STEM activities**. Specialized camps, such as **Imagine Camp, All-Out Sports Camp, and STEAM Camp**, provide focused experiences in the arts, athletics, and science. **Summer School is available to boost core academic skills. High school students can enroll in UC-approved courses**, offered both **in-person and online**, to advance or recover credits. These programs promote learning, creativity, and connection in a fun environment.





SOUTHLANDS

Christian Schools



Location & Schedule

Southlands Christian Schools
18550 Farjardo St, Rowland Heights, CA 91748

Morning and Afternoon Camps

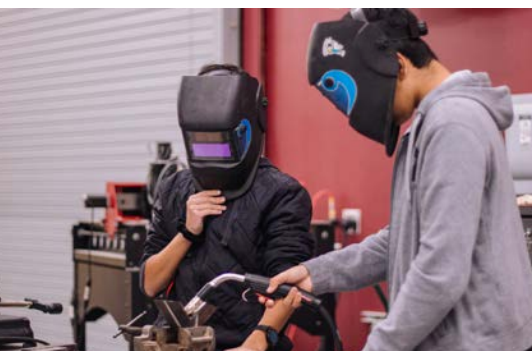
Age Group & Length

Kinder through 8th

9 weeks
Dates to be determined

Course Information

Camp Southlands offers a dynamic nine-week summer program blending **education and fun**. Mornings are dedicated to STEM activities, including **robotics, 3D printing, astronomy, coding, and video game design**. Afternoons feature a variety of electives such as **sports, cooking, music, art, and computers**. **Tuesdays** include half-day field trips to destinations like Medieval Times, Discovery Cube, and Griffith Observatory. **Wednesdays** are reserved for full-day excursions to attractions such as Knott's Berry Farm, Soak City, Disneyland, and Universal Studios!





WELCOME TO YOUR ADVENTURE

global bridge
ASSOCIATES



WELCOME TO YOUR ADVENTURE

✨ **WE ARE SO EXCITED YOU ARE HERE!** ✨

You are about to begin a great adventure — exploring life in abroad, studying in a new school and becoming a member of a new family.

Leaving home to study in a new country takes courage. Adapting to a different language and culture can be challenging, but it is also an opportunity for growth. GBA is here to support you in making the most of your study abroad experience. By engaging with your host family, school, and community, you will develop valuable skills that will enrich your life and create lasting memories.

When you choose Global Bridge Associates, you are getting years of combined experience, and the personal attention GBA is known for. We are committed to meeting every aspect of your expectations with diligence and care.





LET US BE YOUR BRIDGE TO YOUR NEXT ADVENTURE



EXPLORE THE WORLD!

GBA's Student Engagement Division designs and oversees dynamic educational experiences beyond the classroom, offering students enriching, hands-on learning opportunities that foster curiosity and personal growth.





FREQUENTLY ASKED QUESTIONS

FREQUENTLY ASKED QUESTIONS

Who is GBA?

GBA is a housing and management service company dedicated to providing comprehensive services to schools, host families, students and overseas partners. We ensure a safe and efficient process when dealing with homestays. With local support and in-field personnel, we have the resources to make the process of hosting a student comfortable, safe and easy.

Who Can Host?

Homestay Families provide our international students a wide range of landscapes, climates, activities, and lifestyles. Homestay Families are also flexible and open-minded, are age 26 or older, come in all sizes and represent the diversity of American culture. Our families are of varied economic, religious and racial backgrounds. The best hosts are those who enjoy meeting new people and who can spend time with their student on a daily basis.

Will a Background Check be Required?

Yes. By law, it is required that we perform a background check on each person over the age of 18 who resides in your home.

How Many Students Am I Allowed to Host at the Same Time?

Long-term students are placed in a single room private bedroom
Short-term or camps, two students of the same gender per room for up to 4 students per household.
Students may share a common bathroom.

Will My Student Come with His/Her Own Spending Money?

Yes. Students are expected to have their own spending money for personal expenses (toiletries, extracurricular school activities not included in the tuition, clothes, entertainment).

Does the Host Family have Legal Guardianship of the Student?

Yes. GBA will share guardianship with the host family to manage the child's education and living arrangements while in the U.S. The shared guardianship provides access to emergency services for the student

Can I Specify a Preferred Gender?

Absolutely, your home is your personal space and comfort zone. We want both you and our guests comfortable.

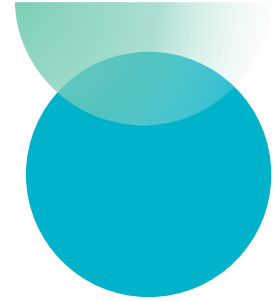


Summary

Partnering with Global Bridge Associates (GBA), as your Homestay Management Company will provide your international students with a safe, supportive, and enriching homestay experience. Our program carefully matches students with welcoming host families, creating a home away from home where students can thrive academically, socially, and culturally.

At GBA, we believe that a strong homestay program is the foundation of a successful international student experience, and we are committed to making it a positive and memorable journey for everyone involved.

Partnering with us ensures a seamless homestay experience, with dedicated support for agents, schools, and students. Together, we can provide an unforgettable cultural and educational opportunity for students worldwide.



Connie Aguilar

Co-Founder

+1.626.476.0531

connie@gba-us.com



Philip M Martin

Co-Founder

+1.949.998.1458

pmartin@gba-us.com

